

## Effective Property Protection

### WP WASTO

Anti-intrusion  
security and protection  
from flooding,  
vandalism and natural  
disasters





WP WASTO Reference: „Strickers Kehr Wieder Spitze“, Hamburg



WP WASTO Reference: „HafenCity“, Hamburg



WP WASTO Reference: „HafenCity“, Hamburg



WP WASTO Reference:  
„Centogene Institut“, Rostock



WP WASTO Reference:  
„Centogene Institut“, Rostock

## Feeling secure and – a basic human need

More and more often, the catastrophic effects of flooding have shown how inadequately many buildings are protected from the consequences of such natural events. Flood water, mud slides or even avalanches penetrating into property frequently put lives and livelihoods at risk. And they always wreak a high financial cost in terms of damage. The patented WP WASTO flood protection system from Husemann & Hücking now gives you the ability to create effective bulkheads to seal off openings in endangered buildings.

Conventional systems and techniques for holding back water, mud or snow often provide inadequate security, especially if doors or windows are subjected to increasing pressure over a long period, as, for example, from rising water. However, the WP WASTO flood protection system is extremely watertight and guarantees effective sealing for all kinds of openings in external walls.

Being designed on a modular basis, the WP WASTO system is universally applicable and can be used in all sorts of different situations. Our patented securing system (patent no. 10248168) enables components to be installed quickly whenever catastrophe looms, adapting to different wall thicknesses and surrounding masonry to provide a firm seal for all wall openings.

No matter what reason you have for planning to fit a building with such protection, the WP WASTO system gives you the opportunity to shield your





- scientific tested
- patented
- approved in practice



#### The tested application widths of WP WASTO

application range		water level	Equipment
up to 2.000 mm	x	bis 600 mm	without strengthening section and medium post
up to 2.000 mm	x	bis 2.000 mm	with strengthening section
up to 4.000 mm	x	bis 600 mm	with strengthening section
up to 4.000 mm	x	bis 1.200 mm	with strengthening section and medium post

For further informations and technical datas download the current WP WASTO assembly instructions on our homepage: [www.wpwasto.de](http://www.wpwasto.de).

premises and contents from damage in a multitude of risk situations.

This new protective system also shows its strengths whenever there is a threat of break-ins or serious damage. The highly resistant steel wall that it forms provides active security and a high level of protection in flood-threatened areas, avalanche regions and in city centre locations where there is a danger of vandalism.

solated properties, such as hunting lodges, can also be fitted with the system to make unauthorised access to them much more difficult.

The system is sold via the steel trade to specialist companies who provide professional onsite installation.



Member of HochwasserKompetenzCentrum e.V.

## Simple assembly

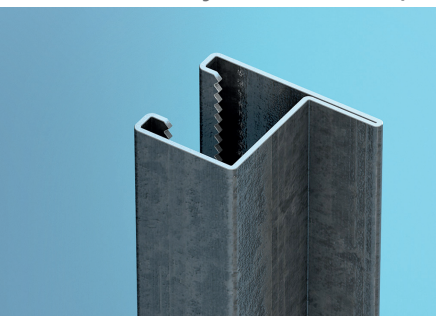


The lateral guide tracks, glued with a seal and predrilled, are secured with dowels to the building on the left and right next to the opening or in the reveal, and sealed at the base. The slats are then adjusted to length and preprepared seals are stuck on.

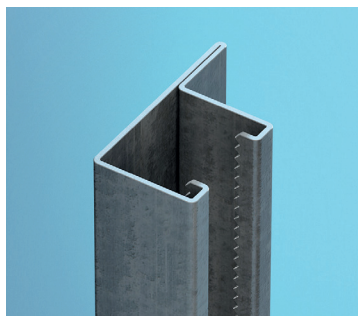
The slats are slotted into the lateral tracks, tightened with the two clamps and the vertical connection points are sealed. The WP WASTO system is then ready for use. The system is disassembled in reverse order. Once cleaned of sealant, the zinc-plated tracks can then be stored.

The WP WASTO system can therefore be used again and again.

## Basic system components



Ratchet track, outer, B 62 x T 45 mm 901200 (WP W03-01)



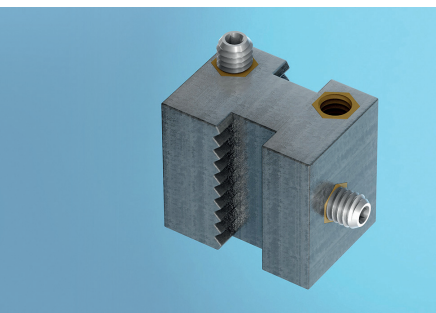
Ratchet track, inner, B 70 x T 37 mm 901201 (WP W03-02)



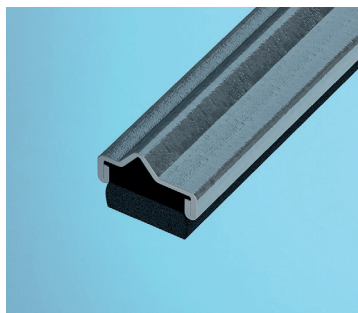
Slat, B 105 x T 25 mm 901202 (WP W03-03)



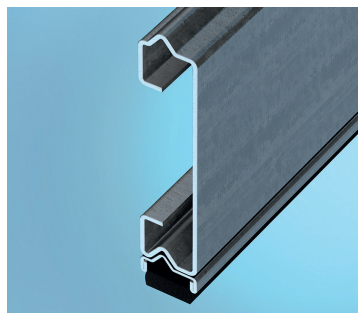
Strengthening section, B 97 x T 35 mm 901203 (WP W03-04)



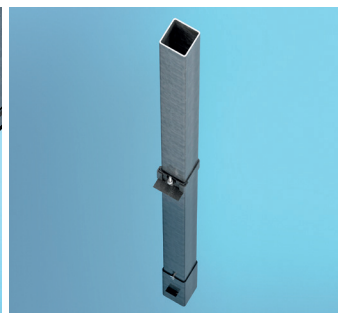
Clamp, normal, B 55 x T 39 x H 49 mm 905200 (WP W03-11Z)



Bottom seal, Profil 24 x 7 mm 901208 (WP W08-06)



Bottom seal with bonded slat 901210



Post, 70 x 70 x 1750 mm 901204 (WP W09-06)

All warranties for WP WASTO systems relate only to the quality of the materials used and the correct processing of individual components by Husemann & Hücking.

The key factors that influence how the system functions are the specific circumstances of each installation and the level of care with which the system is installed.

## made of steel and passion

Husemann & Hücking Profile GmbH  
Zollhausstraße 20 | 58640 Iserlohn, Germany  
Telefon: +49 23 71-97 84-0  
Telefax: +49 23 71-97 84-20  
E-Mail: [info@HusemannHuecking.de](mailto:info@HusemannHuecking.de)  
Internet: [www.husemannhuecking.de](http://www.husemannhuecking.de)  
[www.wpprofile.de](http://www.wpprofile.de) | [www.kpprofile.de](http://www.kpprofile.de) | [www.wpwasto.de](http://www.wpwasto.de)



WP WASTO system components, WP PROFILES, KP sharp-edged and other WP systems with all dimensions available on the smartphone. Use this QR-Code for download.

